



GUAM POWER AUTHORITY

ATURIDÁT ILEKTRESEDÁT GUAHAN
P.O.BOX 2977 • AGANA, GUAM U.S.A. 96932-2977

January 08, 2018

AMENDMENT NO.: II

TO

INVITATION FOR BID NO.: GPA-022-18

FOR

PHYSICAL SECURITY AND ACCESS CONTROL SYSTEM (ACS) REPAIR AND UPGRADE AT VARIOUS GPA LOCATIONS

Prospective Bidders are hereby notified of the following changes and response to inquiries received from Pacific Data Systems dated December 28, 2017, and HSG Co., Ltd. dated December 28, 2018:

CHANGES:

1. Cut-Off Date for Receipt of Questions is changed **FROM** 4:00 P.M., Friday, January 05, 2018 **TO NOW READ** 4:00 P.M., Friday, January 26, 2018.
2. Bid Opening Date is changed **FROM** 2:00 P.M., January 18, 2018 **TO NOW READ** 2:00 P.M., Thursday, February 08, 2018.
3. Under Scope of Work, Phase I, 1st Floor Fadian Main Facility:
 - **ADD:** Cashier Area on 1st Floor to cover the five (5) cashier stations.
4. Under Scope of Work, Phase I, 1st, 2nd, 3rd Floor, Fadian Main Facility:
 - **REMOVE:** Install an alarm cover on the emergency release pull station for all locations where the emergency pull station exists. This cover should be identical to the existing covers used for the GPA Fadian fire alarm pull station whereas the alarm will be activated once cover is pulled.

Note: As it is no longer made a part of subject bid.

Pacific Data Systems inquiry dated 12/28/17:

QUESTION:

1. GPA has not provided detailed specifications for the surveillance cameras to be used by the Bidder at each of the locations. We recommend that GPA provide detailed specifications for these cameras so that all Bidders are recommending cameras of a similar type and capability. Some of

the features that should be defined are: PoE capable, lens size: 1.3mm, 2mm etc., style: dome fixed, dome PTZ, bullet fixed, bullet PTZ, IP66/67 housings, operational lighting requirements, etc.

ANSWER:

Refer to the following attachments:

Attachment A – Minimum camera specifications (Internal/External)

Attachment B – Map of required camera coverage areas

QUESTION:

2. At GPA Fadian it was stated GPA wants the ability to read license plates (License Plate Reader LPR). Should LPR cameras be included for both gates; Main and Employee gate?

ANSWER:

Proposed Camera Systems should be able to view the License Plates of incoming vehicles, but a specific License Plate Reader (LPR) system is not mandatory. Options for an LPR systems can be listed.

QUESTION:

3. The GPA Dededo T&D location is currently running their own video surveillance system. Please identify the brand of the DVR, controller software, and cameras in use.

ANSWER:

The brand of the DVR is called DigiOPS and is standalone system connected to a local DVR at Dededo T&D Location. These cameras are not part of the IFB.

QUESTION:

4. At GPA Dededo T&D, do the additional cameras for this location need to operate under the GeoVision system at GPA Fadian, and/or the existing system (as described in point #3 above)?

ANSWER:

All cameras that will be installed will need to connect back to the Fadian Data Center and should be compatible with GPA's GeoVision system.

QUESTION:

5. At GPA Fadian the vendor/contractor chosen will need to replace emergency pull station covers per the bid's SOW. Please identify all locations where this work needs to be performed.

ANSWER:

Since the release of this IFB, the Emergency Pull Station covers have already been installed and thus will no longer be part of Scope. No bid on this is required.

QUESTION:

6. The bid specifies all cameras will need to communicate back to Fadian. Please describe any bid requirements that the Bidder should include in its bid to meet this requirement (example; telecom controllers, routers, telecom circuits between the location and GPA Fadian, etc.)

ANSWER:

Dededo T&D, Dededo CT and the Transportation Compound all have existing network connectivity back to GPA Fadian Data Center. All vendors will provide network and communication wiring from IP Camera to primary switch(es) at IDF Cabinet for each location. Required conduit and other installation to include equipment, hardware and services should be part of the proposed cost.

HSG Co., Ltd. inquiry dated 12/28/17:

QUESTION:

1. Is there power supply at Fadian main gate adequate for camera?

ANSWER:

Yes.

QUESTION:

2. Is there available and ample power on rooftops for parking viewing cameras?

ANSWER:

No.

QUESTION:

3. What license plate monitoring detail in parking lot required for day and night time?

ANSWER:

Proposed Camera Systems should be able to view the License Plates of incoming vehicles, but a specific License Plate Reader (LPR) system is not mandatory. Options for an LPR systems can be listed.

QUESTION:

4. What is the required video recording storage capacity?

ANSWER:

64Gb or better.

QUESTION:

5. Is continuous recording required?

ANSWER:

Proposed cameras should be able to do continuous recording.

QUESTION:

6. Is there plenum in the ceilings at Fadian?

ANSWER:

Yes.

QUESTION:

7. Can cabling be run over drop ceiling or do they require conduits?

ANSWER:

Please note the following:

- Fadian Main Office – Cable wiring must follow existing cable trays and have proper routing conduit where required.
- Dededo T&D – All IP Cameras must connect to existing switches in IDF box at location.
- Dededo CT – All IP Cameras must connect to existing switches in IDF box at location.
- Transporation – All IP Cameras must connect to existing switches in IDF box at location.

QUESTION:

8. Please confirm that all locations cameras are to just connect to the existing IDF through available ports to the switch(es).

ANSWER:

- Fadian Main Office – All IP Cameras must connect to existing switches in the COMS room for each floor.
- Dededo T&D – All IP Cameras must connect to existing switches in IDF box at location.
- Dededo CT – All IP Cameras must connect existing switches in IDF box at location.
- Transportation – All IP Cameras must connect to existing switches in IDF box at location.

QUESTION:

9. Please provide drawings with hallway measurements that Melvyn Kwek said would be made available during the site survey.

ANSWER:

Refer to Attachment B.

QUESTION:

10. What detail do you want to capture? Different for different environments? Indoor vs Outdoor.

ANSWER:

Refer to Attachment A on camera specifications.

QUESTION:

11. Are there any restrictions to wireless transmission?

ANSWER:

It is preferred that the proposed camera solution be hard wired from Camera to network switch. Options for wireless connectivity can be listed.

QUESTION:

12. Do you want on board camera storage?

ANSWER:

Refer to Attachment A, see minimum camera specifications (Internal/External).

QUESTION:

13. Do the remote sites need to view the video footage?

ANSWER:

Remote sites do not need to see video footage.

QUESTION:

14. Does the centralized PA system just need to ring to the common area of the 3 floors or at all offices?

ANSWER:

PA system needs to ring to the common areas of the 3 floors at the Fadian Main Building.

All other Terms and Conditions in the bid package shall remain unchanged and in full force.


JOHN M. BENAVENTE, P.E.
General Manager

ATTACHMENT A

Internal Camera Specifications

Internal Camera should meet or exceed the following minimum specifications:

- Fixed Dome IP CAM 2MP
- 1/2.8" progressive scan super low lux CMOS
- Min. illumination at 0.004 lux
- Dual streams from H.265, H.264, and MJPEG
- Up to 30 fps at 1920 × 1080
- Two-way audio
- Intelligent IR
- 3-axis mechanism (pan / tilt / rotate)
- One sensor input and one alarm output
- Built-in micro SD card slot (SD/SDHC/SDXC/UHS-I) for local storage with 64 gb micro SD Card
- Day and Night function (with removable IR-cut filter)
- Megapixel lens
- DC 12V / PoE (IEEE 802.3af)
- 3D noise reduction
- Smart streaming
- Defog
- Motion detection
- Tampering alarm
- Text overlay
- Privacy mask
- IP address filtering
- Supports iPhone, iPad, Android & 3GPP
- US languages on Web interface
- ONVIF (Profile S) conformant

External Camera Specifications

External Camera should meet or exceed the following minimum specifications:

- bullet IP Camera Fixed
- 3MP progressive scan CMOS
- Dual streams from H.264 and MJPEG
- Up to 20 fps at 2048 × 1536
- Intelligent IR
- IR distance up to 50 m (164 ft)
- P-iris lens for auto iris control
- Vandal resistance (IK10 for metal casing)

- Ingress protection (IP67)
- Tolerant to extreme temperatures (-30°C ~ 50°C / -22°F ~ 122°F)
- One alarm input and sensor output
- Built-in micro SD card slot (SD/SDHC) for local storage with 64 gb micro SD Card
- Two-way audio
- 2D noise reduction
- Defog
- Motion detection
- Tampering alarm
- Privacy mask
- IP address filtering
- DC 12V / AC 24V / PoE (IEEE 802.3af)
- Day and Night function (with removable IR-cut filter)
- Supports iPhone, iPad, Android & 3GPP
- US languages on Web interface
- ONVIF (Profile S) conformant

FIRST FLOOR EXIT ROUTE



IN FIRE EMERGENCY
DO NOT USE ELEVATOR.
USE EXIT STAIRS

LEGEND:



EXIT



LOCATION

ATTACHMENT B

1A – LOBBY NEXT TO THE ELEVATOR (39.5 ft)

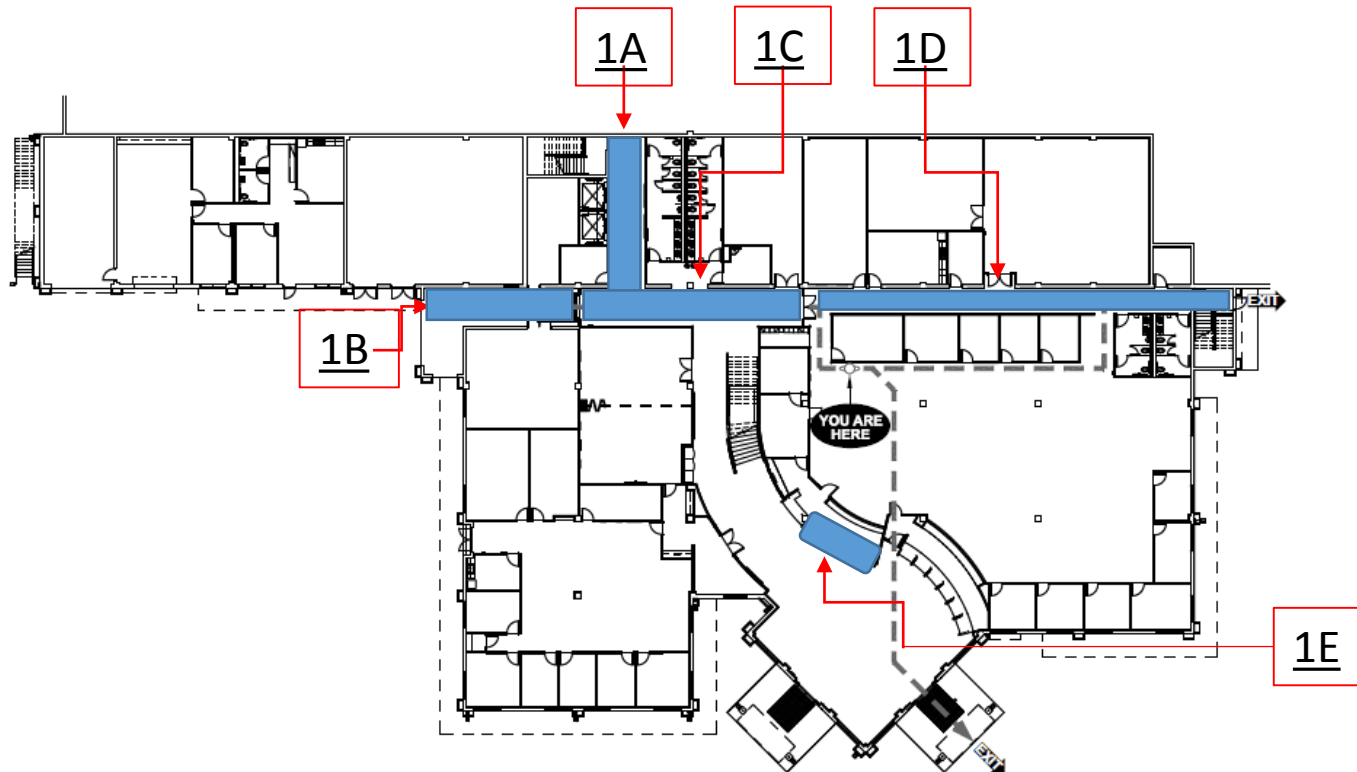
1B – EMPLOYEE ENTRANCE/EXIT (40 ft)

1C – CUSTOMER SERVICE ENTRANCE/EXIT TO
EMPLOYEE ENTRANCE (58 ft)

1D – CUSTOMER SERVICE HALLWAY (101.5 ft)

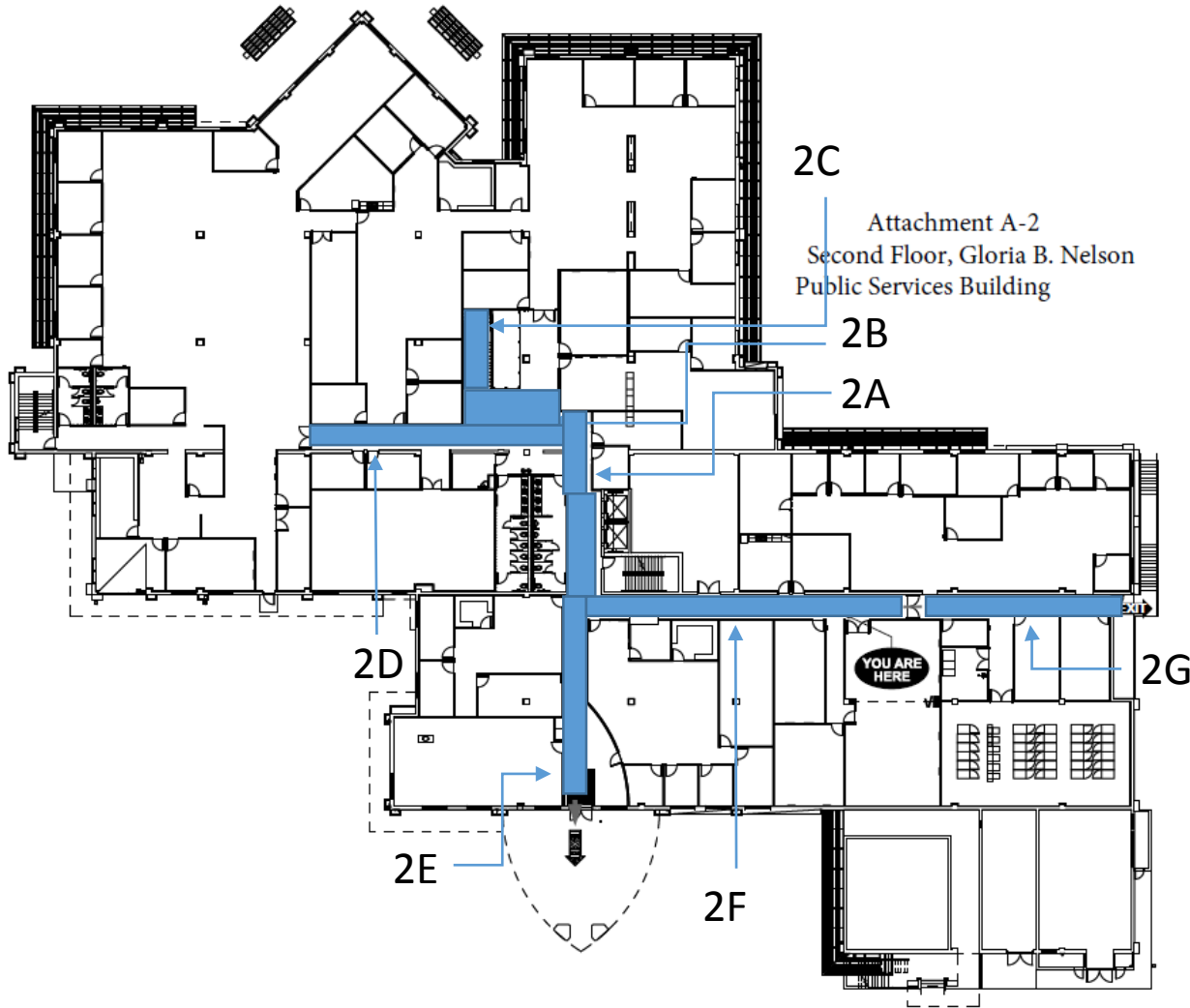
1E – CASHIERS

** SHADED BLUE AREAS REQUIRE CAMERA COVERAGE



Attachment A-1

First Floor, Gloria B. Nelson Public Services Building



- 2A – LOBBY AREA NEAR ELEVATOR (58 ft *w/2B)
- 2B – COMM/ELECTRICAL ROOMS (Combined w/2A)
- 2C – STAIRWELL TO MAIN LOBBY (42 ft)
- 2D – ENGINEERING HALLWAY (79 ft)
- 2E – EMPLOYEE ENTRANCE UP TO HR/IT HALLWAY (52 ft)
- 2F – HR/IT HALLWAY (90 ft)
- 2G – IT HALLWAY (57 ft)

** SHADED BLUE AREAS REQUIRE CAMERA COVERAGE

SECOND FLOOR EXIT ROUTE



IN FIRE EMERGENCY
DO NOT USE ELEVATOR.
USE EXIT STAIRS

LEGEND:



EXIT



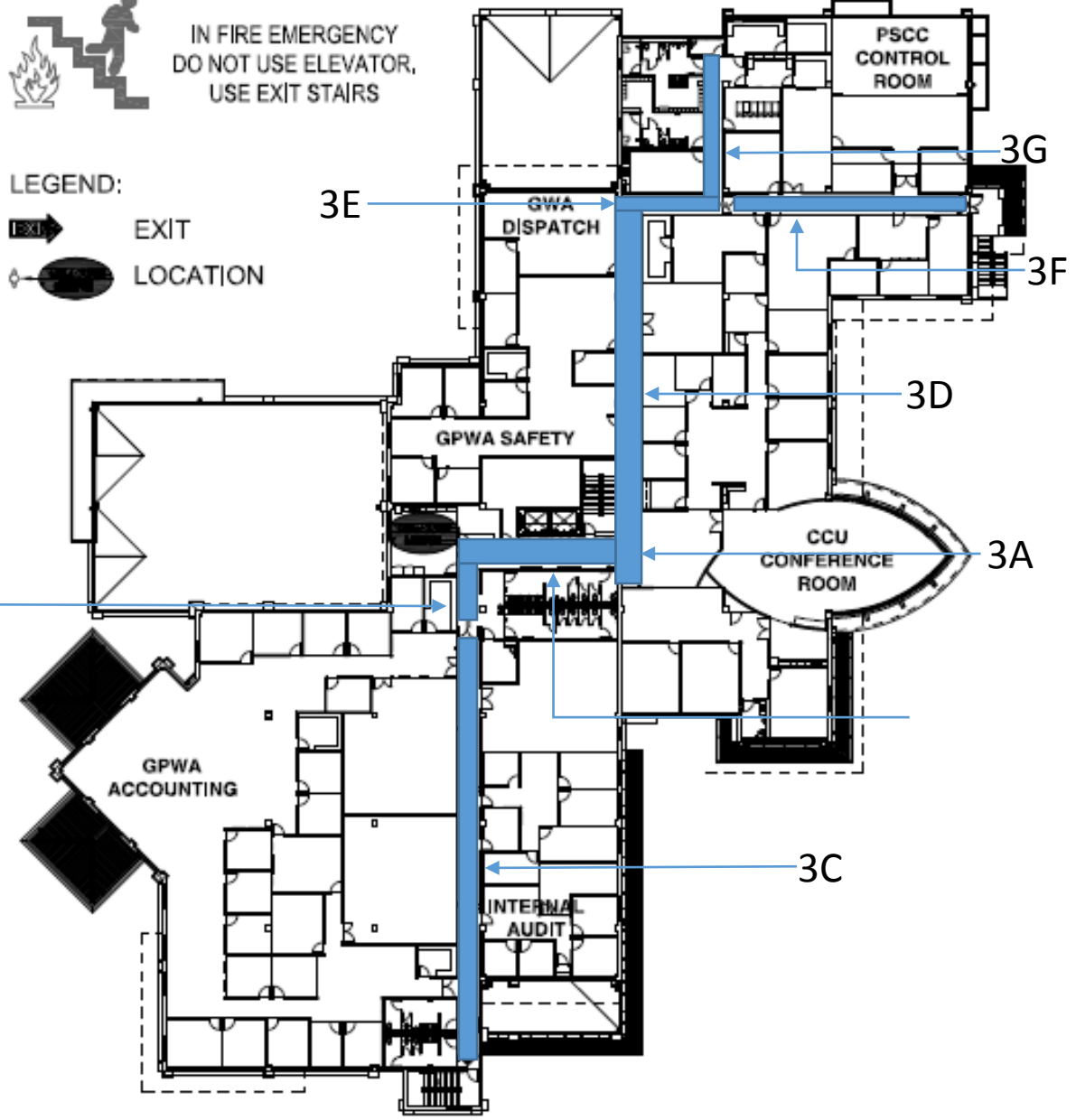
LOCATION

THIRD FLOOR EXIT ROUTE



IN FIRE EMERGENCY
DO NOT USE ELEVATOR,
USE EXIT STAIRS

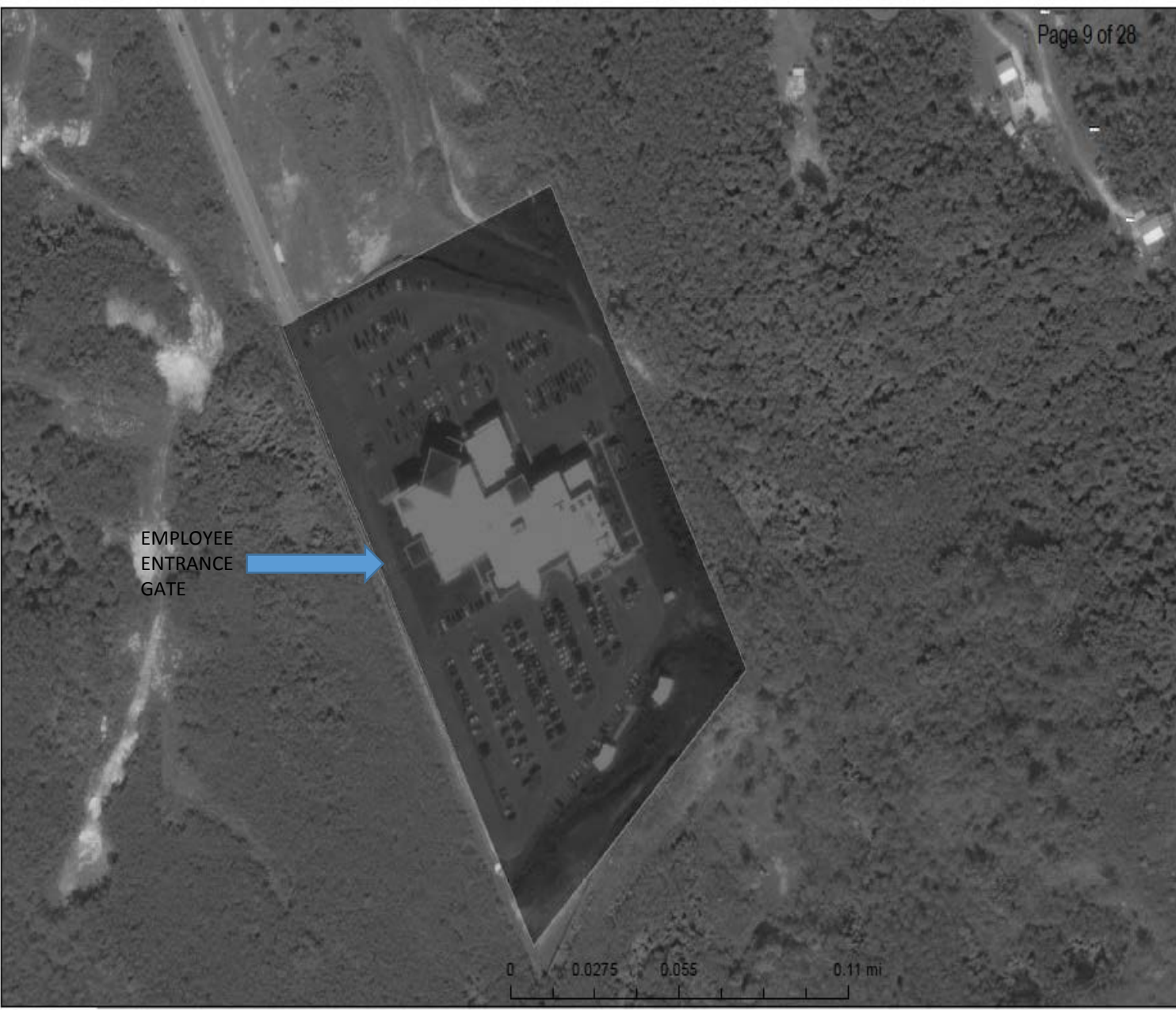
LEGEND:
EXIT
LOCATION



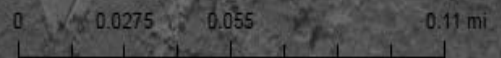
- 3A – THIRD FLOOR ELEVATOR (40 ft)
- 3B – ENTRANCE TO FINANCE (23.5 ft)
- 3C – FINANCE HALLWAY (125 ft)
- 3D – EXECUTIVE HALLWAY (106 ft)
- 3E – ENTRANCE TO PSCC (29 ft)
- 3F – PSCC HALLWAY (70.5 ft)
- 3G – PSCC BATHROOM HALLWAY (44.5 ft)

** SHADED BLUE AREAS REQUIRE CAMERA COVERAGE

COVERAGE NEEDED FOR SHADED AREA TO INCLUDE FENCE LINE, PARKING LOTS, AND EMPLOYEE ENTRANCE GATE



EMPLOYEE
ENTRANCE
GATE





COVERAGE NEEDED FOR SHADED AREA TO INCLUDE ENTIRE PERIMETER AND PARKING LOT TO FENCE LINE.



COVERAGE NEEDED FOR SHADED AREA TO INCLUDE BOTH ENTRANCES AND FENCE LINE BEHIND TWO BIG TANKS



Attachment C
Combustion Turbine Compound
Dededo



COVERAGE NEEDED FOR SHADED AREA TO INCLUDE ENTIRE PERIMETER AND GATE ENTRANCE

